

ELLIOT FIELD STATION

BLAST LAB FOUNDATION AND STRONG SLAB FOR CONSTRUCTION

SPECIFICATIONS:

28-day concrete
strength: 5000 psi

Mild steel: Gr. 60

PT steel : Gr. 270

PT operation shall follow all
applicable manufacturer
specifications &
recommendations

Clear cover: 3' at surfaces
exposed to earth, 2'
elsewhere

BL-T1: TITLE SHEET

BL-S1: FOUNDATION AND STRONG SLAB
PLAN VIEW

BL-S2: TYPICAL TRANSVERSE SECTION
(Section 1-1)

BL-S3: TRANSVERSE SECTION THROUGH SUMP
(Section 2-2)

BL-S4: TYPICAL LONGITUDINAL SECTION
(Section 3-3)

BL-S5: LONGITUDINAL SECTION THROUGH SUMP
(Section 4-4)

BL-S6: SUMP DETAILS
(TRANSVERSE SECTION)

BL-S7: SUMP DETAILS
(LONGITUDINAL SECTION)

BL-S8: STRONG SLAB DETAILS

BL-S8-1: TYPICAL TIE-DOWN ASSEMBLY

BL-S8-2: Strong Slab Reinforcement
(PLAN VIEW)

BL-S8-3&4: Strong Slab Cross Sections

BL-S9: TYPICAL RETAINING WALL CORNER
(PLAN VIEW)

BL-S10: RETAINING WALL CORNER
(Sections A-A & B-B)

BL-S11: TYPICAL ISOLATOR ANCHOR BOLT
INSTALLATION

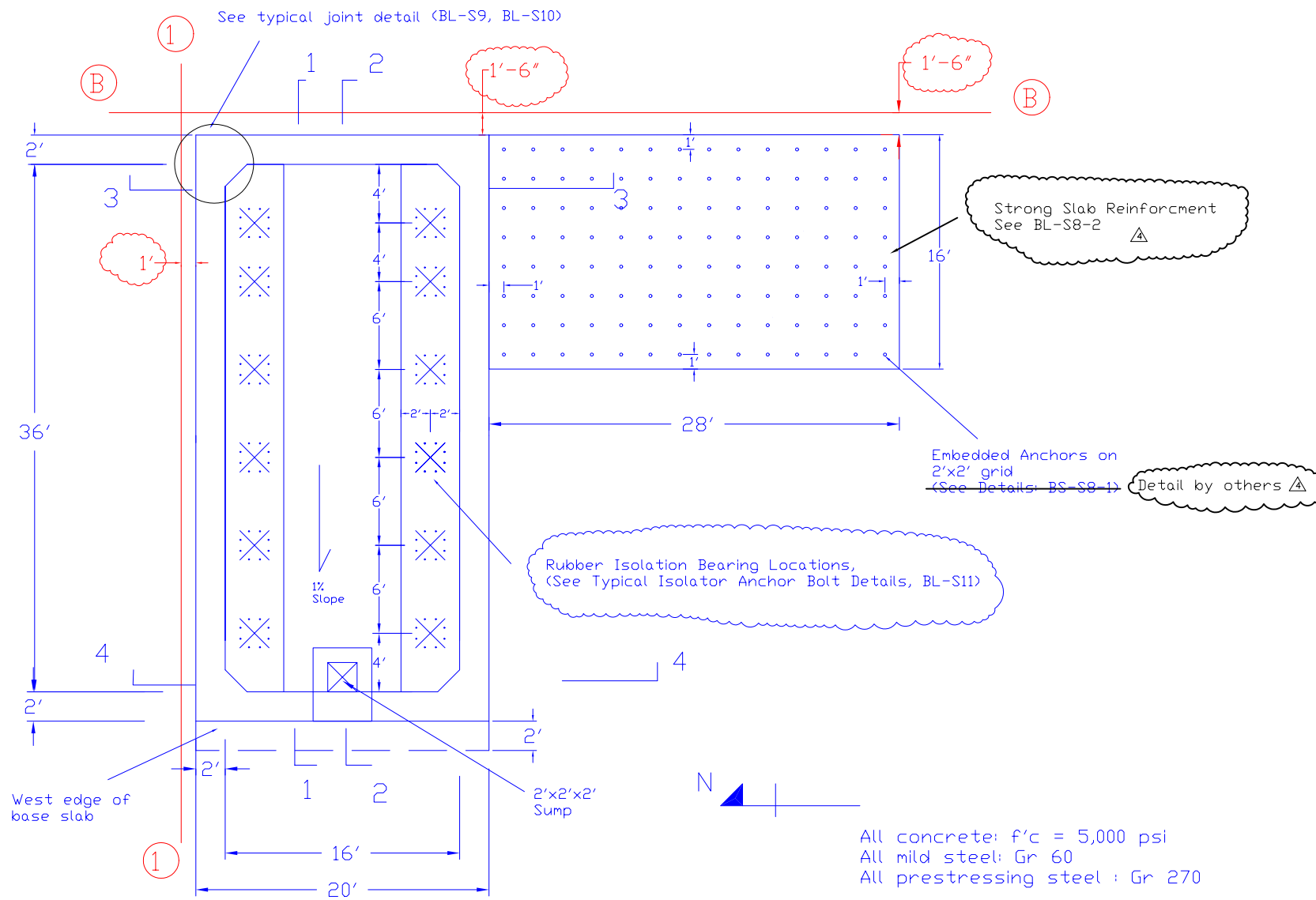
Blast Lab Project

DWG No.: BL-T1

Date: 2003/07/16

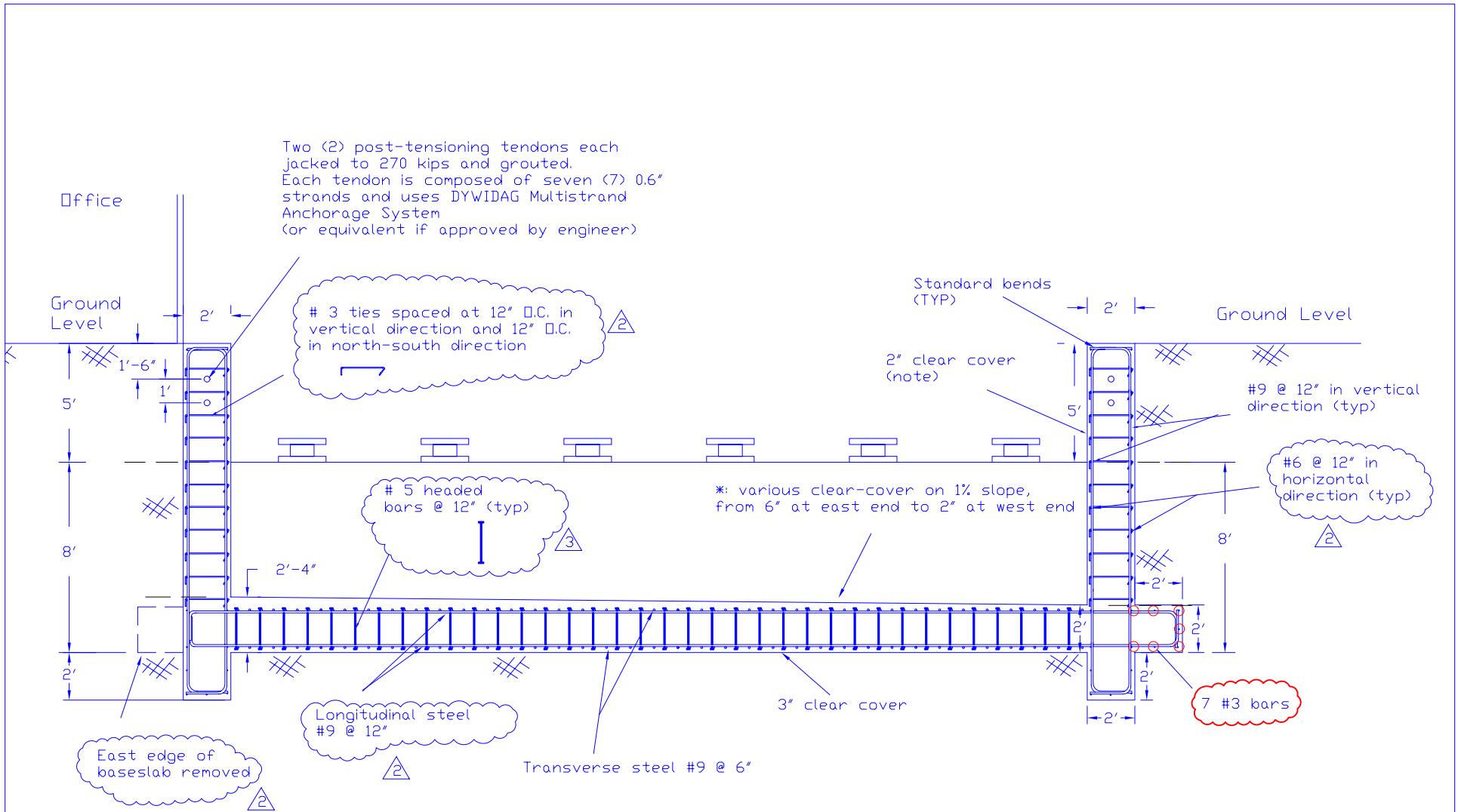
 revised 2003/09/09

D&C: TRN, CSL



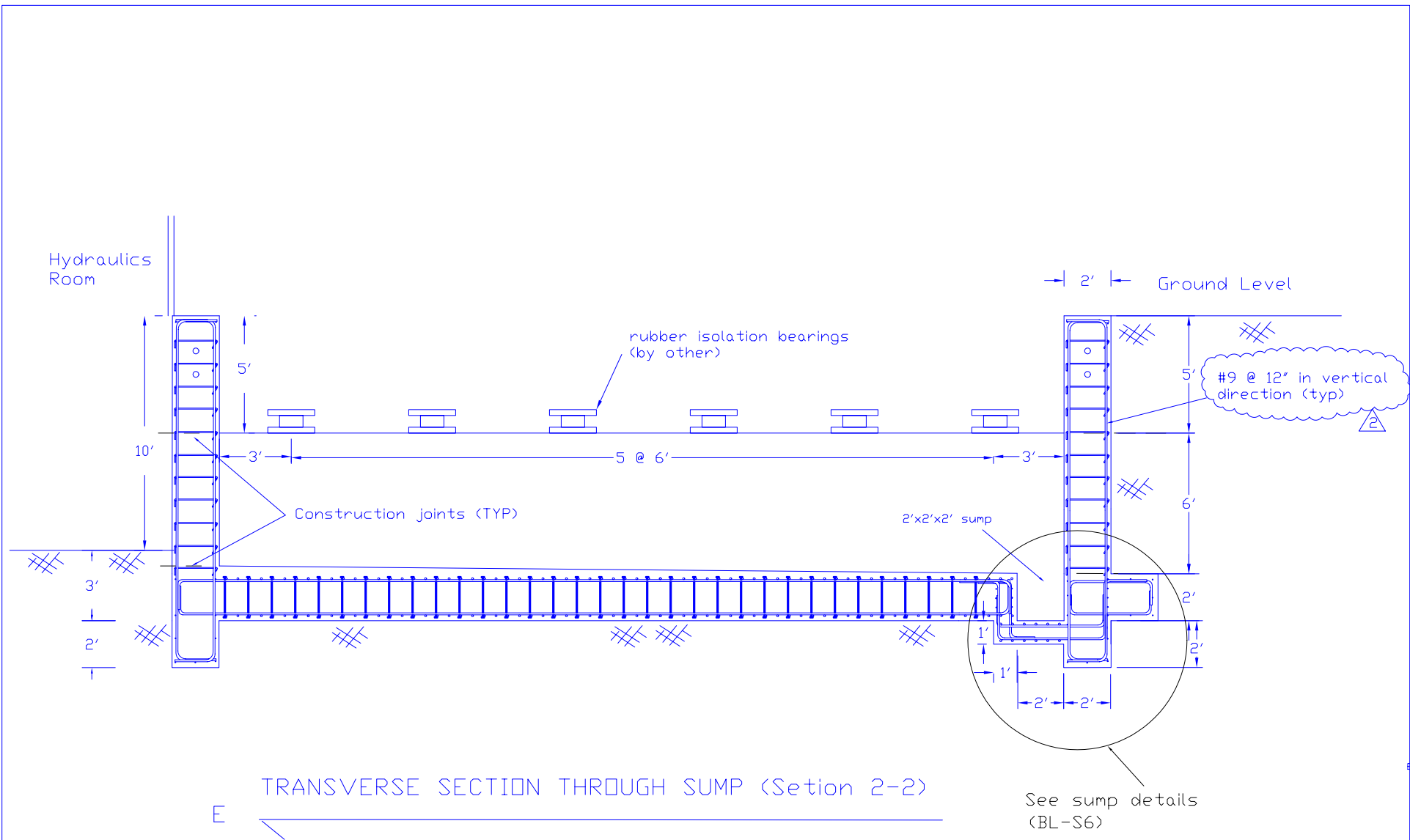
FOUNDATION AND STRONG SLAB PLAN VIEW


Blast Lab Project	
DWG No.: BL-S1	
Date: 2003/07/16	
4	revised 2003/09/09



E ← TYPICAL TRANSVERSE SECTION (Section 1-1)

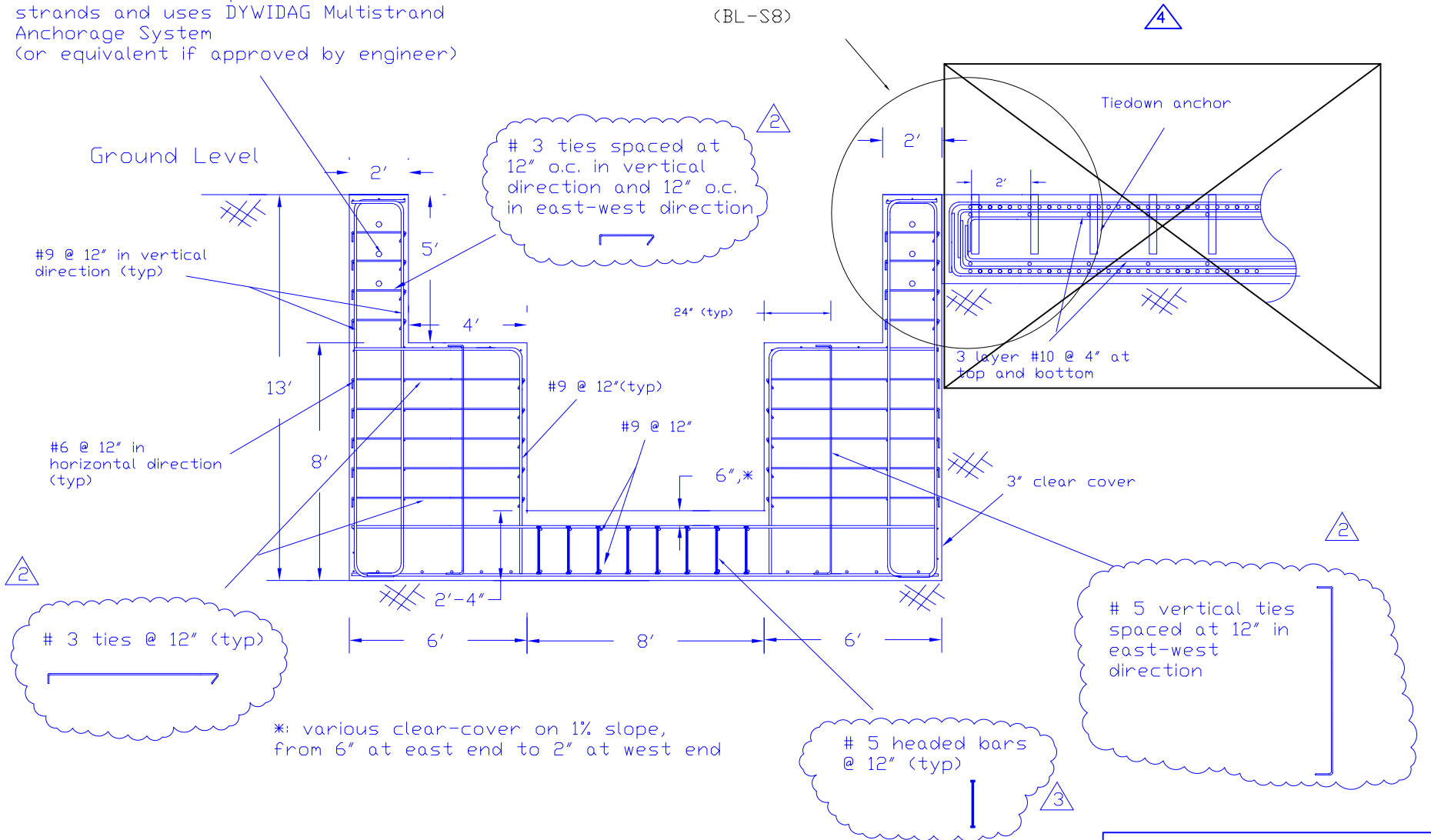
Blast Lab Project	
DWG No.: BL-S2	
Date: 2003/07/17	
2	revised 2003/07/11
3	revised 2003/07/26 (RF1 086)



Blast Lab Project
DWG No.: BL-S3
Date: 2003/07/16
 revised 2003/07/11

Three (3) post-tensioning tendons each jacked to 150 kips and grouted. Each tendon is composed of five (5) 0.6" strands and uses DYWIDAG Multistrand Anchorage System (or equivalent if approved by engineer)

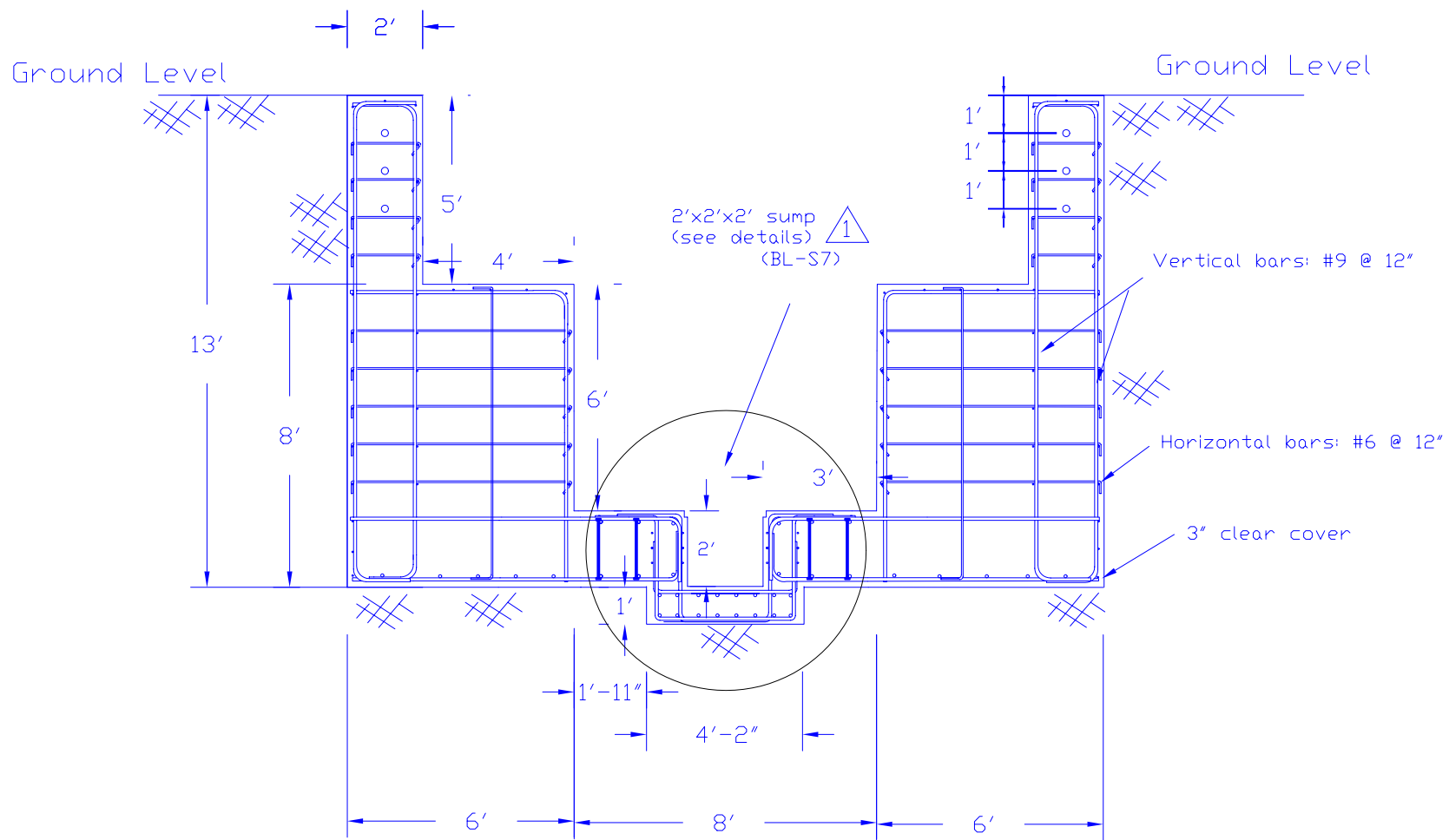
See 3'-thick strong floor details (BL-S8)



TYPICAL LONGITUDINAL SECTION, (Section 3-3)


N

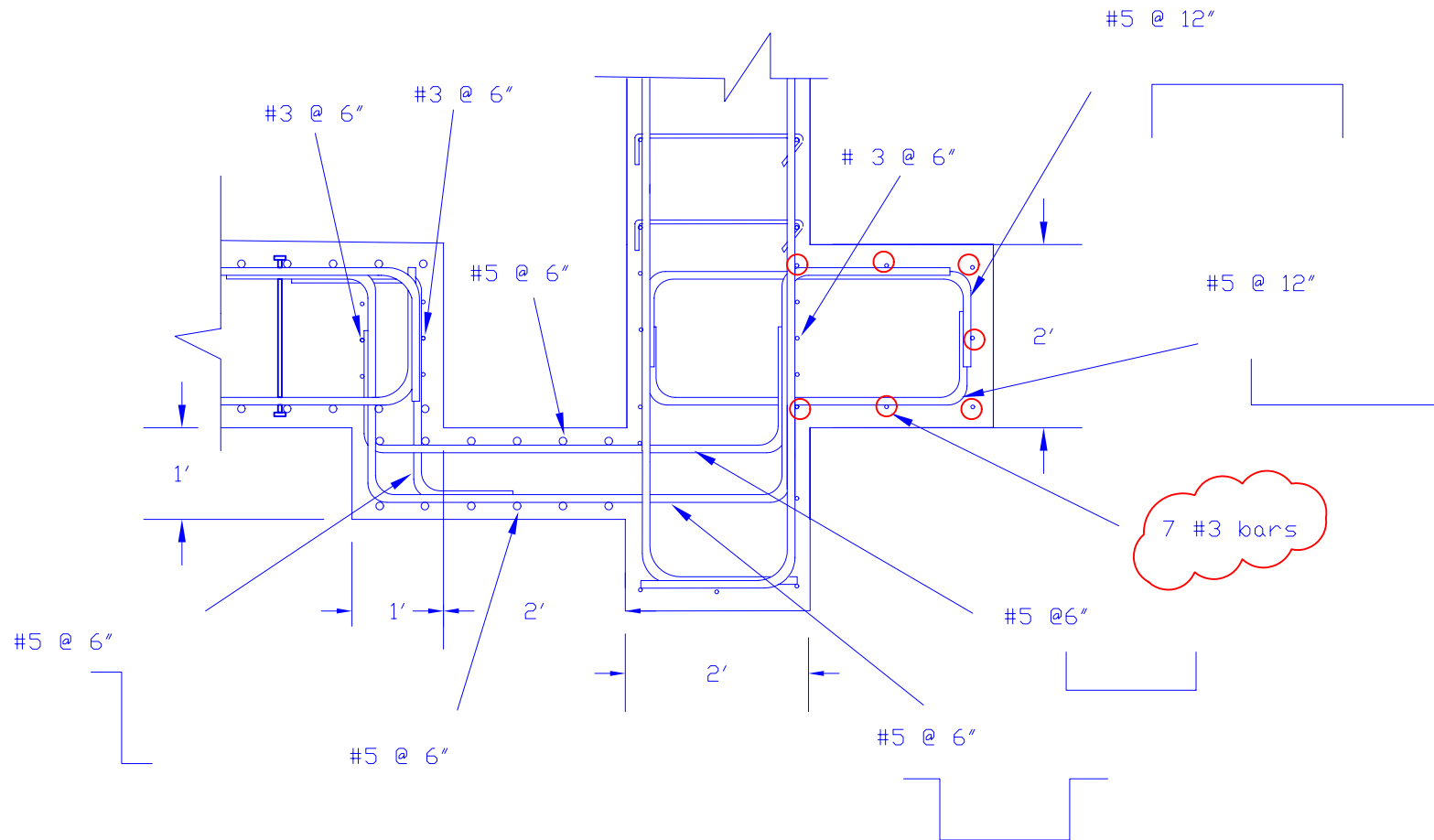
Blast Lab Project	
DWG No.: BL-S4	
Date: 2003/07/16	
2	revised 2003/07/11
4	revised 2003/09/09
3	revised 2003/07/26 (RF1 086)



LONGITUDINAL SECTION THROUGH SUMP, (Section 4-4)

N

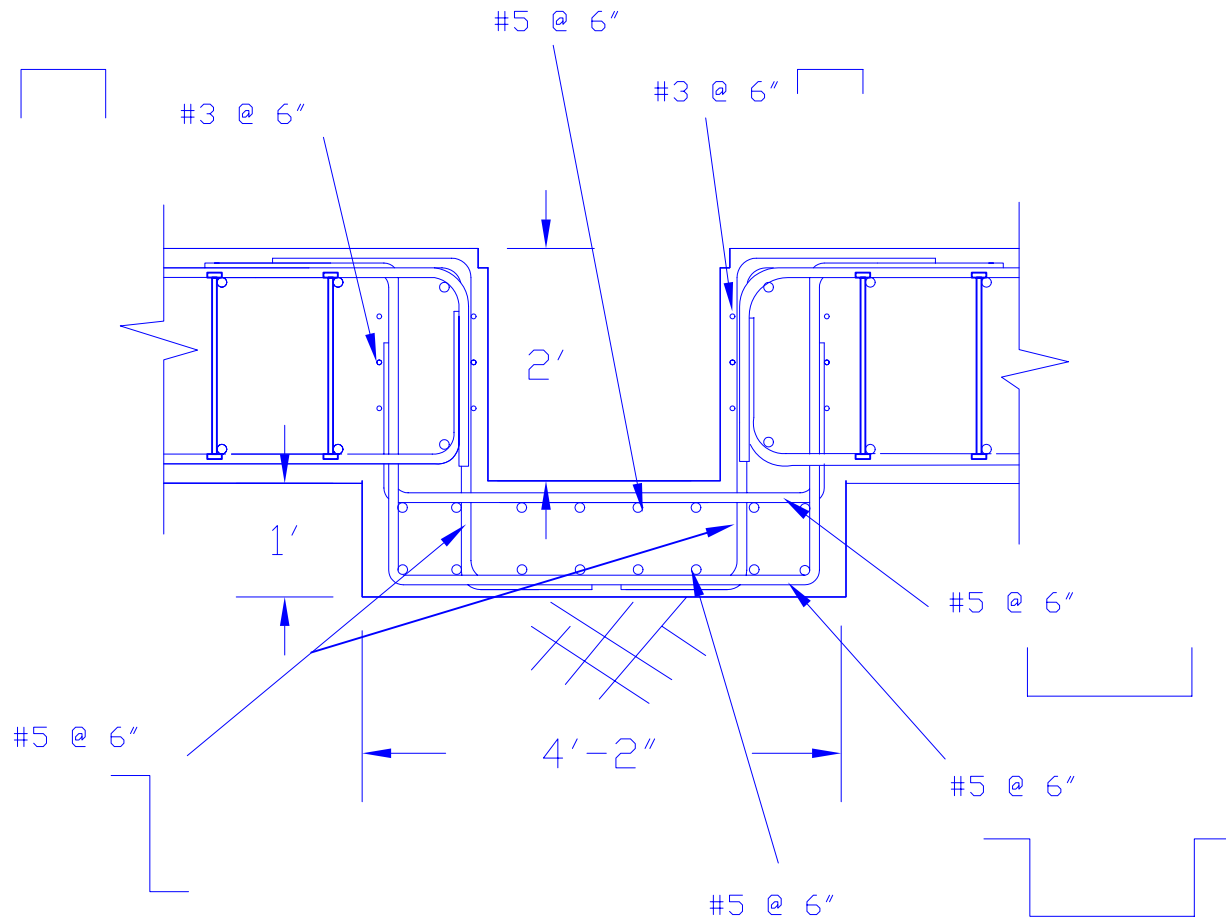
Blast Lab Project
DWG No.: BL-S5
Date: 2003/07/16
 revised 2003/07/08



DETAIL OF TRANSVERSE SECTION THROUGH SUMP 1

E

Blast Lab Project
DWG No.: BL-S6
Date: 2003/07/16
1 revised 2003/07/08



DETAIL OF LONGITUDINAL SECTION THROUGH SUMP 1

N



Blast Lab Project
DWG No.: BL-S7
Date: 2003/07/16
1 revised 2003/07/08

4

Construction joint :

Cast 3-ft slab after
post-tensioning of wall

Tiedown anchors on 2'x2' grid.
(See BL-S8-1)

1

1 layer #10 @ 4" at
top and bottom

#11 @ 24"

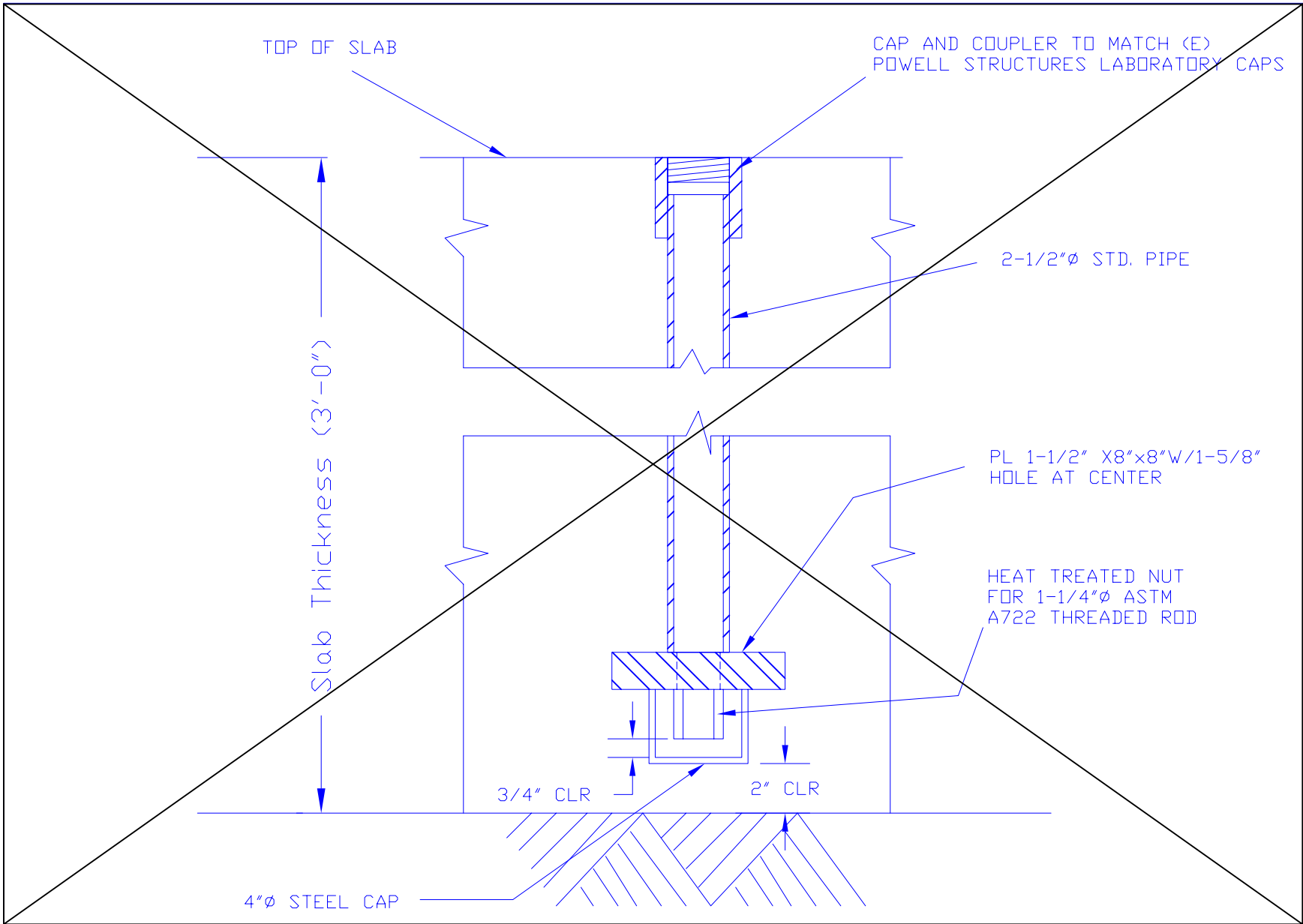
Post tensioned wall

2" clear cover on top
3" clear cover on bottom

3 layer #10 @ 4" at
top and bottom

3'-THICK STRONG SLAB DETAILS

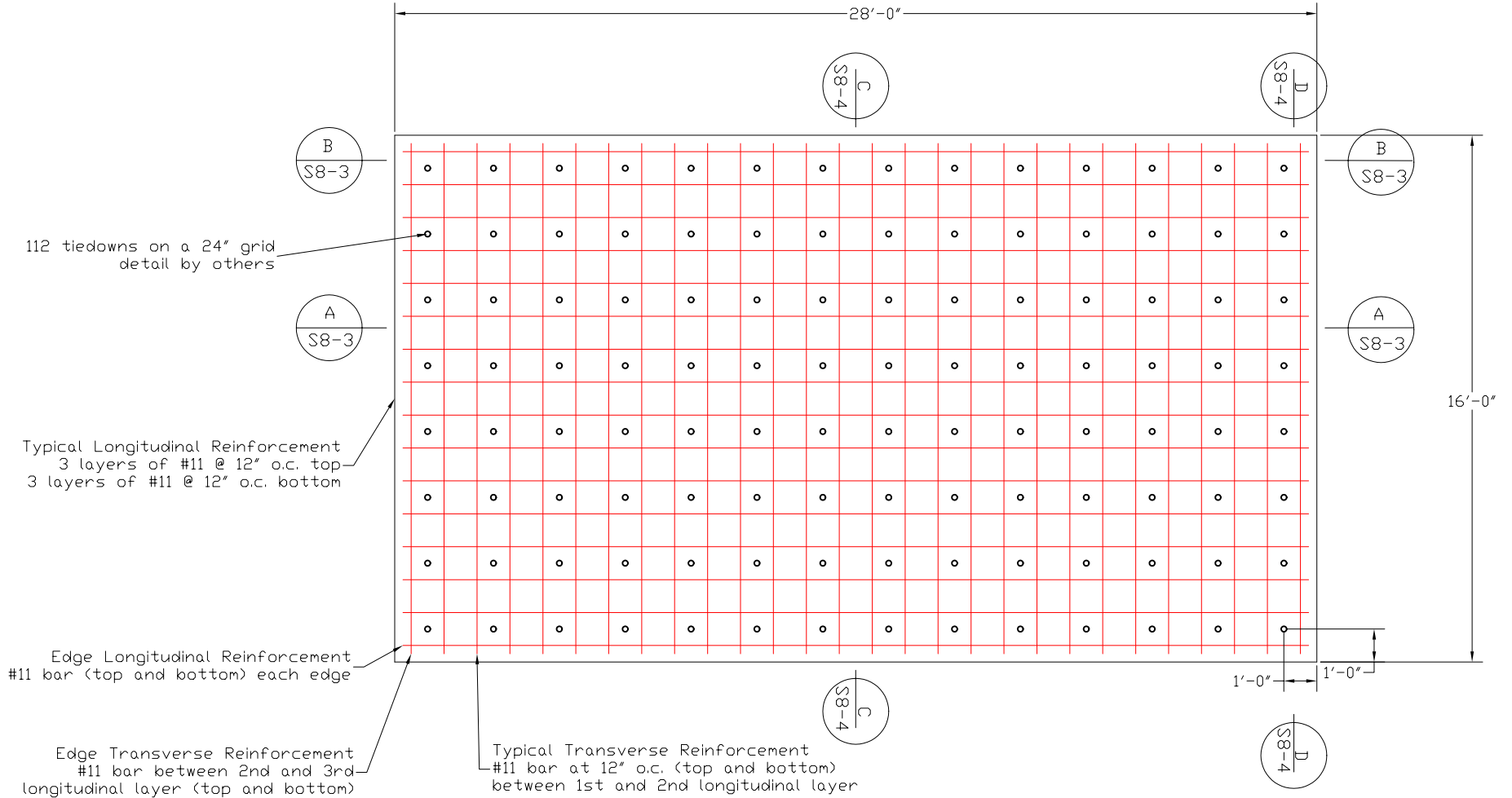
Blast Lab Project	
DWG No.: BL-S8	
Date: 2003/07/16	
1	revised 2003/07/08
4	revised 2003/09/09




4

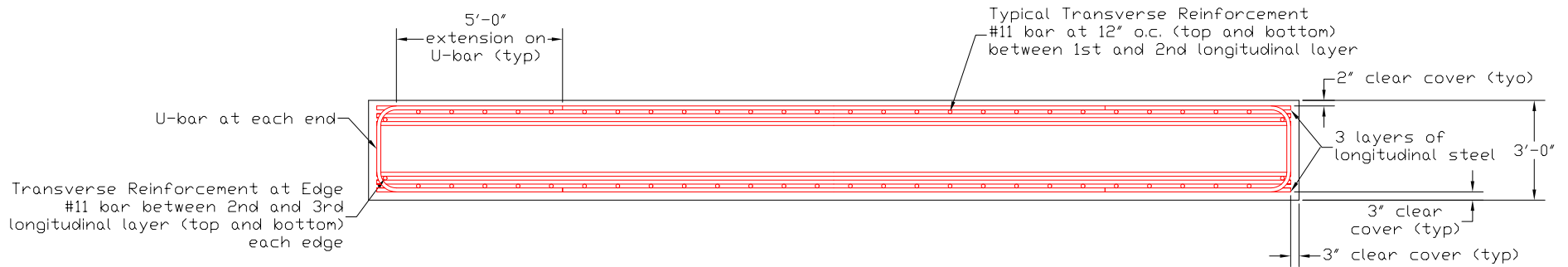
TYPICAL TIE-DOWN ASSEMBLY

Blast Lab Project
DWG No.: BL-S8-1
Date: 2003/07/16
4 revised 2003/09/09

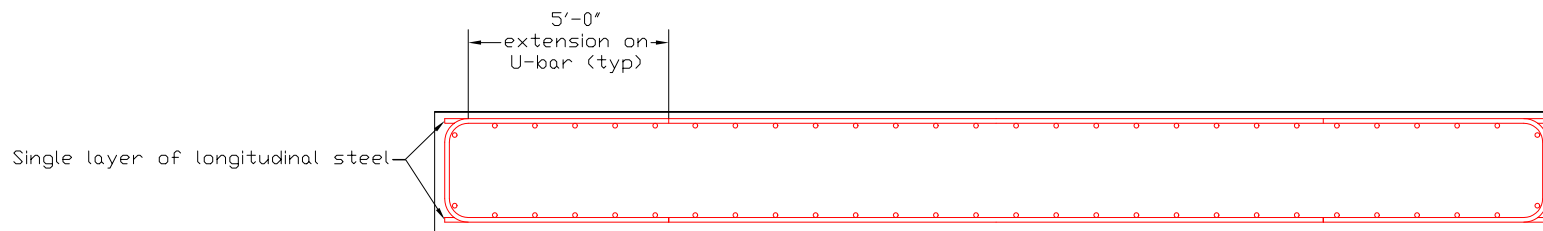


Strong Slab Reinforcement (Plan View)  ← N

Blast Lab Project
DWG No.: BL-S8-2
Date: 2003/07/16
 revised 2003/09/09



Strong Slab Reinforcement
Section A-A - Typical Transverse Section 4



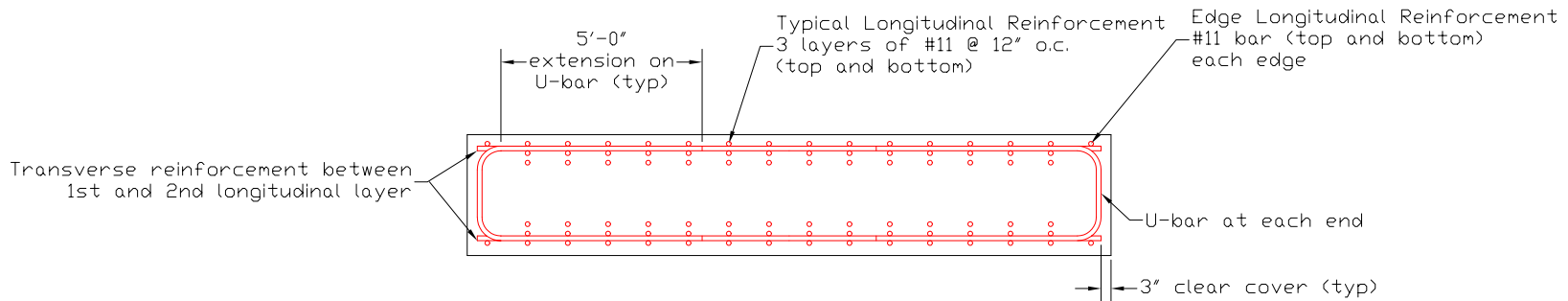
Strong Slab Reinforcement
Section B-B - Transverse Section at Edge 4

Blast Lab Project

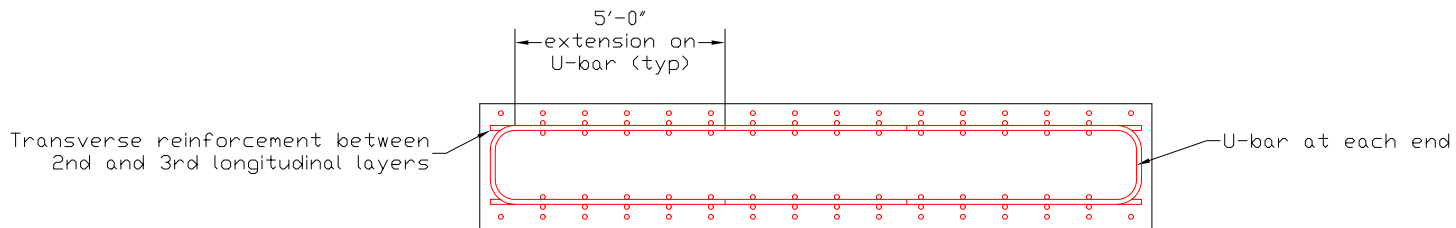
DWG No.: BL-S8-3

Date: 2003/07/16

4 revised 2003/09/09



Strong Slab Reinforcement
Section C-C - Typical Longitudinal Section 4



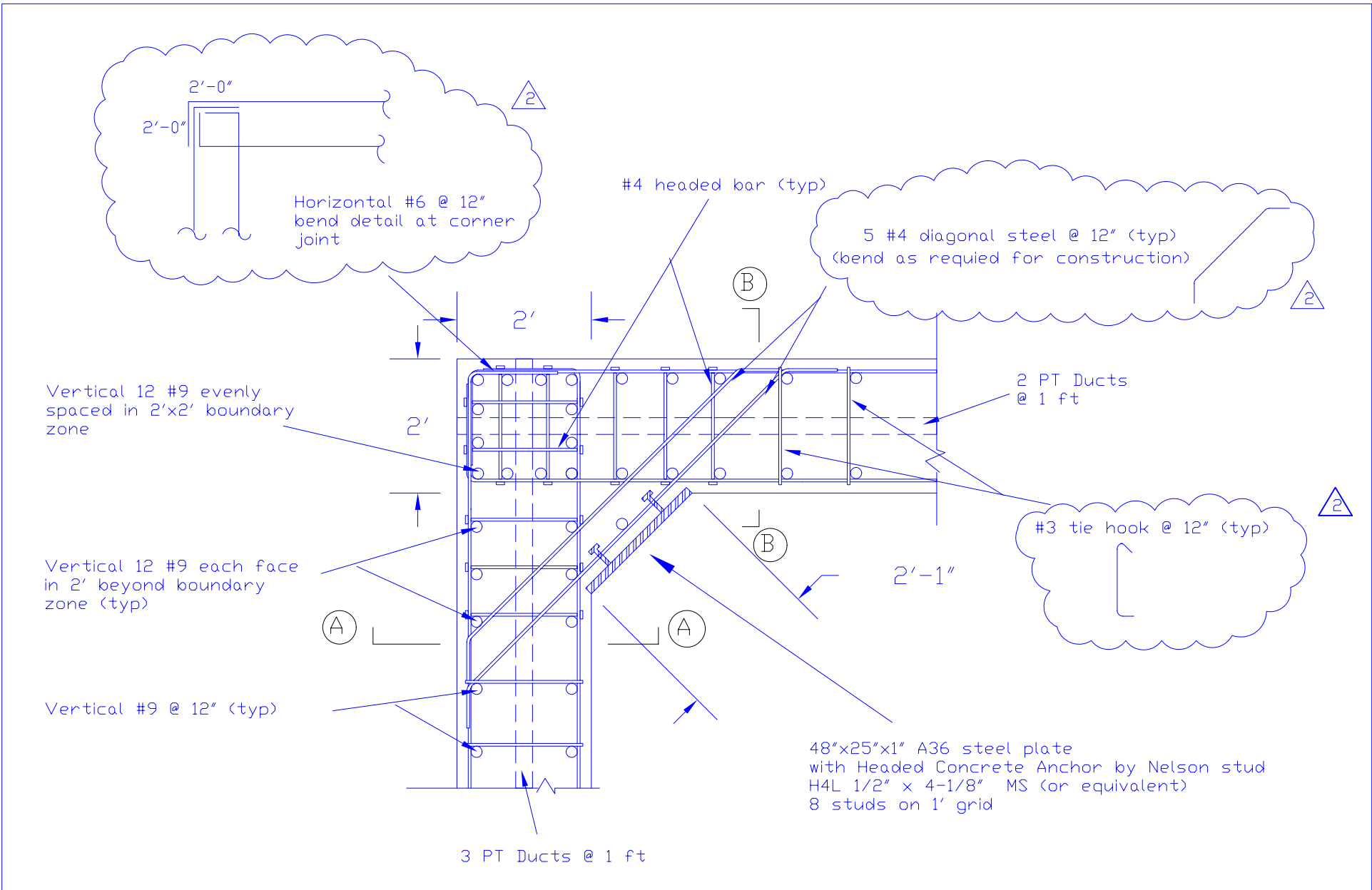
Strong Slab Reinforcement
Section D-D - Longitudinal Section at Edge 4

Blast Lab Project


DWG No.: BL-S8-4

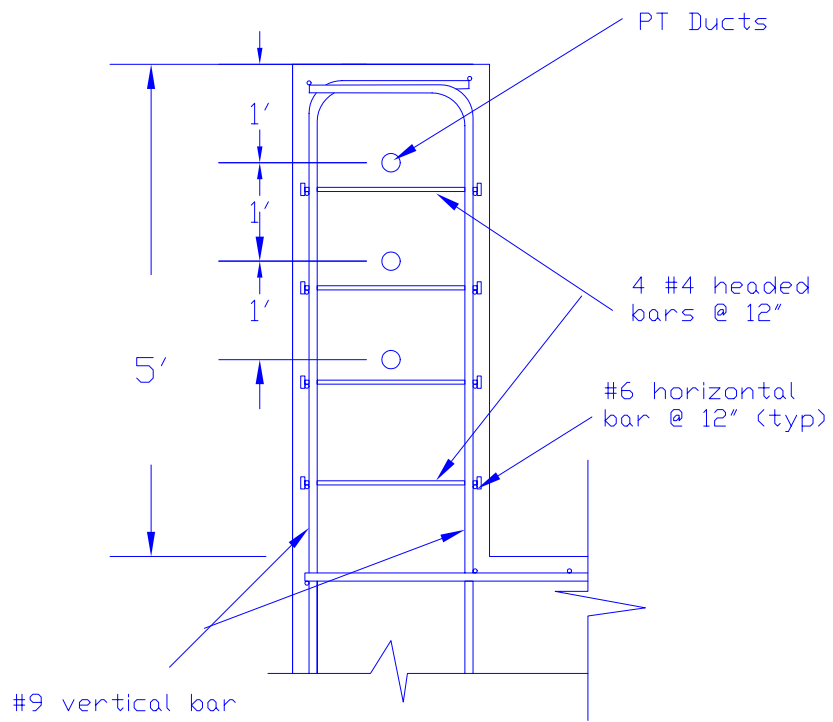
Date: 2003/07/16

4 revised 2003/09/09



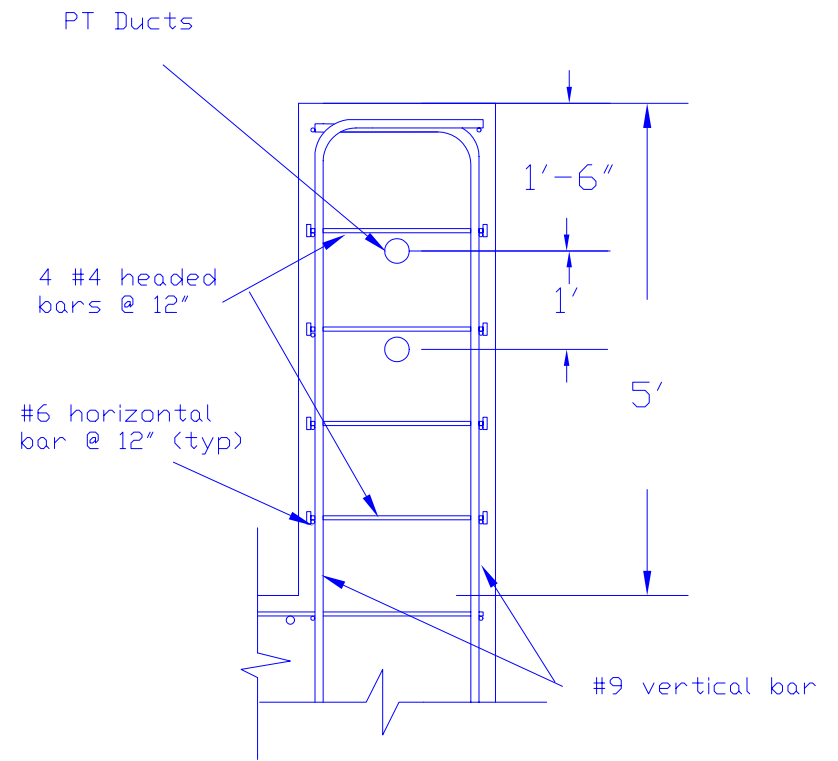
TYPICAL RETAINING WALL CORNER DETAIL - PLAN VIEW

Blast Lab Project	
DWG No.: BL-S9	
Date: 2003/07/16	
	revised 2003/07/11



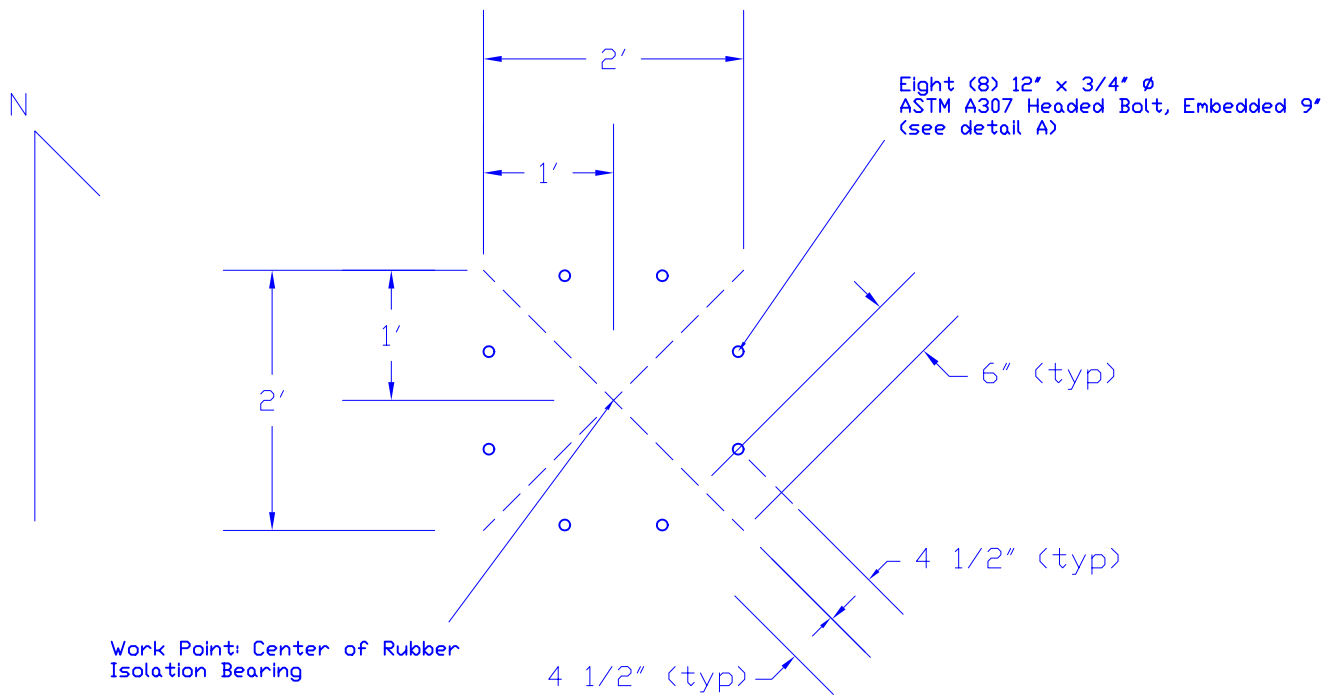
Section A-A

(diagonal bars not shown)

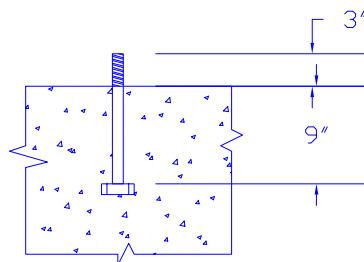


Section B-B

Blast Lab Project
DWG No.: BL-S10
Date: 2003/07/16



TYPICAL ISOLATOR ANCHOR BOLT INSTALLATION



Detail A - Typical Anchor Bolt

Blast Lab Project
DWG No.: BL-S11
Date: 2003/07/23